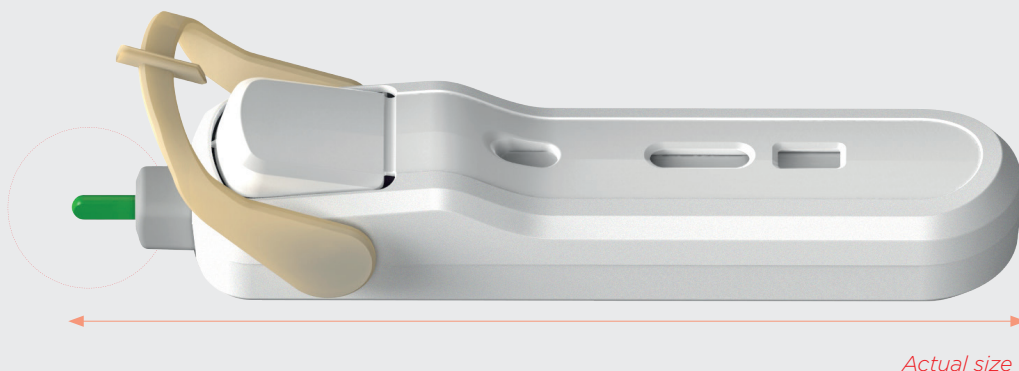




Pascal RDT Platform

The Pascal platform offers improved performance and usability in point of care testing with a built-in safety lancet, unique blood collection and delivery system, and integrated buffer delivery mechanism.



The AtomoRapid 'Pascal' RDT platform has been designed to make rapid testing easier and more accessible. The handheld platform includes a unique integrated buffer delivery mechanism that delivers the required quantity of chase buffer at the touch of a button.

Interlocked user steps help to mitigate common user errors, making the platform suitable for professional point of care and self test applications. It can be customised for most lateral flow test strips that use capillary blood samples.

PLATFORM FEATURES	BENEFITS
All-in-one test device	<ul style="list-style-type: none"> • Greater convenience and usability • Integration of features minimises the need for training • Supports clinical waste control by reducing the number of contaminated and potentially hazardous test components for disposal
Interlocked, sequenced user steps	<ul style="list-style-type: none"> • Supports compliance with test procedures • Ensures fewer user errors
Contact activated, auto-retracting safety lancet	<ul style="list-style-type: none"> • Safeguards against needlestick injuries and cross-contamination • Supports compliance to best practice in capillary sampling
Innovative blood collection unit	<ul style="list-style-type: none"> • Simplifies test procedure and ensures easy blood collection • Improves blood volume accuracy
Controlled delivery of blood to the test strip	<ul style="list-style-type: none"> • Eliminates blood splatter by transferring blood sample cleanly • Delivers blood to the correct point on the test strip
Integrated buffer delivery mechanism	<ul style="list-style-type: none"> • Guarantees delivery of the correct buffer volume, enhancing test performance • Removes the need for separate buffer, providing greater convenience • Simplifies test procedure and mitigates risks of user error

PLATFORM SPECIFICATIONS	
Type	Single use, disposable lateral flow RDT platform
Device dimensions	125mm x 30mm x 25mm
Safety lancet needle gauge	21G
Needle penetration depth	2.4mm
Blood volume* collected	Designed to accommodate 5µL to 20µL
Buffer volume* delivered	Calibrated up to 120µL
Test strip dimensions	4 (±0.2)mm x 73.5 (±0.5)mm

*other volumes may be possible, further testing will be required



Lance Finger



Collect Blood



Deliver Blood



Deliver Buffer



Read Result

Award Winning Design

Atomo rapid diagnostic tests have been recognised internationally for innovative design, performance and ease-of-use.



Discover how partnering with Atomo Diagnostics can provide your business with an efficient and low-risk pathway from product development to commercialisation of your rapid diagnostic test

About Atomo Diagnostics

Atomo is a specialist medical device design and original equipment manufacturing (OEM) company with unique and proprietary technologies that improve rapid diagnostic testing by emphasising ease-of-use, accuracy and performance.

Atomo's all-in-one RDT device platforms put the end user first and make it easy to screen for various chronic conditions and test for a range of infectious diseases.

Quality Assurance & Regulatory

Atomo's operations are ISO 13485 certified for the design, development and manufacture of in vitro diagnostic medical devices.



Contacts

Australia - Head Office

Level 2
701-703 Parramatta Road,
Leichhardt, NSW 2040

Telephone: +61 (0)2 9099 4750

atomodiagnostics.com/oem/
info@atomodiagnostics.com

atomo diagnostics
SIMPLY BETTER DIAGNOSTICS